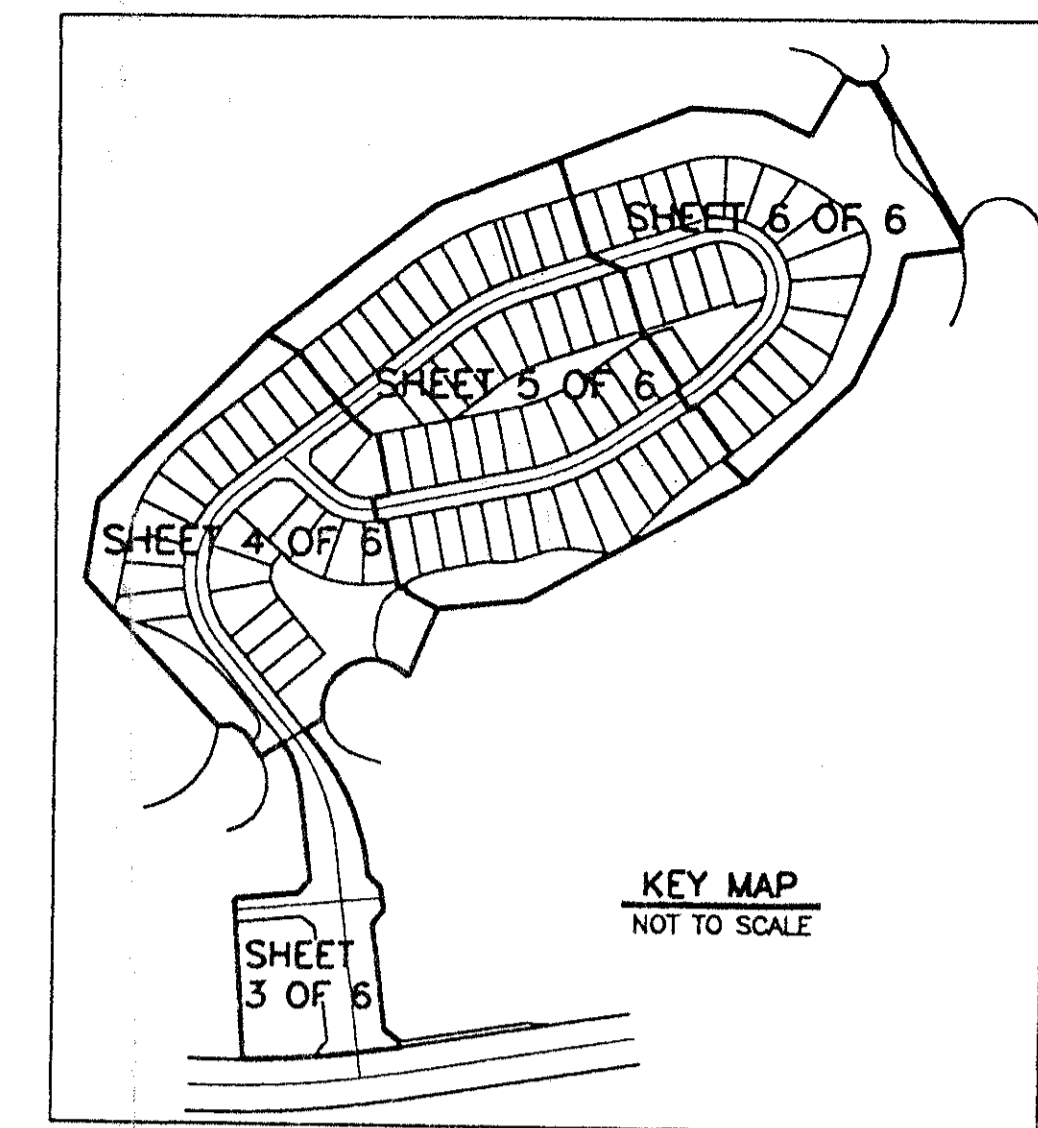


ABERDEEN - PLAT NO. 25

A PORTION OF A PLANNED UNIT DEVELOPMENT
 LYING IN SECTIONS 15 AND 16, TOWNSHIP 45 SOUTH, RANGE 42 EAST
 BEING A REPLAT OF A PORTION OF ABERDEEN - PLAT NO. 2 AS RECORDED IN PLAT
 BOOK 55, PAGES 11 THRU 22, PUBLIC RECORDS OF PALM BEACH COUNTY, FLORIDA
 SHEET 3 OF 6

0270-029

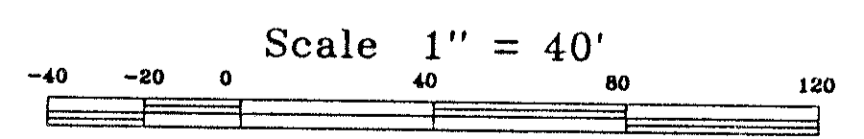
98



STATE OF FLORIDA
 COUNTY OF PALM BEACH
 This Plat was filed for record at _____
 M. This _____ day of _____, 19____
 and duly recorded in Plat Book No. _____
 on Page _____
 Dorothy H. Wilken, Clerk of the Circuit Court
 By _____ D.C.

Pet
80-153

COORDINATE NOTE:
 STATE PLANE COORDINATES SHOWN ARE GRID DATUM, NAD 83 1990
 ADJUSTMENT, FLORIDA EAST ZONE, COORDINATE SYSTEM 1983 STATE
 PLANE TRANSVERSE MERCATOR PROJECTION.
 LINEAR UNIT = US SURVEY FEET
 ALL DISTANCES ARE GROUND
 SCALE FACTOR = 1.0000288
 GROUND DISTANCE X SCALE FACTOR = GRID DISTANCE
 N 88°22'07" W (PLAT BEARING) -01°45'15" COUNTER CLOCKWISE
 S 89°52'38" W (GRID BEARING) BEARING ROTATION
 (PLAT TO GRID)
 THE SOUTH LINE OF SECTION 16, TOWNSHIP 45 SOUTH, RANGE 42 EAST
 ALSO THE SOUTH LINE OF ABERDEEN-PLAT NO.2, AS RECORDED IN PLAT
 BOOK 55, PAGES 11-22, PUBLIC RECORDS OF PBCO, FLORIDA.



GOLF COURSE - TRACT "C"
 ABERDEEN - PLAT NO. 2
 (PLAT BOOK 55, PAGES 11 - 22)

ABERDEEN - PLAT NO. 2
 (PLAT BOOK 55, PAGES 11 - 22)

ABERDEEN - PLAT NO. 2
 (PLAT BOOK 55, PAGES 11 - 22)

ABERDEEN - PLAT NO. 2
 (PLAT BOOK 55, PAGES 11 - 22)

UTILITY SITE
 LE CHALET PLAT NO. 1
 (PLAT BOOK 31, PAGES 166 - 167)

POINT OF COMMENCEMENT
 SE CORNER OF SECTION 16,
 TOWNSHIP 45 S., RANGE 42 E.
 FOUND 3/4" IRON PIPE

FOUND P.R.M. NO NUMBER
 THE INTERSECTION OF THE EAST LINE OF HAGEN
 RANCH ROAD (O.R.B. 3502, PAGES 1524-1526)
 AND THE SOUTH LINE OF ABERDEEN PLAT NO. 2
 (PLAT BOOK 55, PAGES 11 - 22)

SUBDIVISION * ABERDEEN
 BOOK 78
 FLOOD ZONE 0
 CHAD # K9
 SE 80-153
 PWD NAME ABERDEEN

TAZ-442

78/98
0270-029

Landmark Surveying & Mapping Inc.
 1850 FOREST HILL BOULEVARD
 PH. (407)433-5405 SUITE 100 W.P.B. FLORIDA

ABERDEEN - PLAT NO. 25